

## Contents



## **The Zoo** (Shareware and Registered Version Help)

Introduction

Note: Updates for Registered Users

How to Use the Program

Advanced Functionality

Registration Information (e.g. **How to Order**)

System Requirements

What is Shareware

Getting Support and Help

Copyright Notice





## Introduction

### The Zoo

*A place to keep your Computer Critters*

**The Zoo** can best be described as a **mini-shell**. It is meant to co-exist with the shell you normally use. If you are still using Windows 3.1 or Windows 3.11, **The Zoo** offers the ability to nest programs or documents under a single icon (i.e. groups within groups). Under Windows 95, you will find the product just as useful at eliminating clutter on your start menu and fast access to groups of related programs or documents.

All shells allow you to launch programs or launch documents (into their respective applications) by using file extensions. **The Zoo** is no different than dozens of other shareware and commercial products in that respect. The difference is in the presentation of the programs to the user, the ease of use, and the degree of customization allowed by the user.

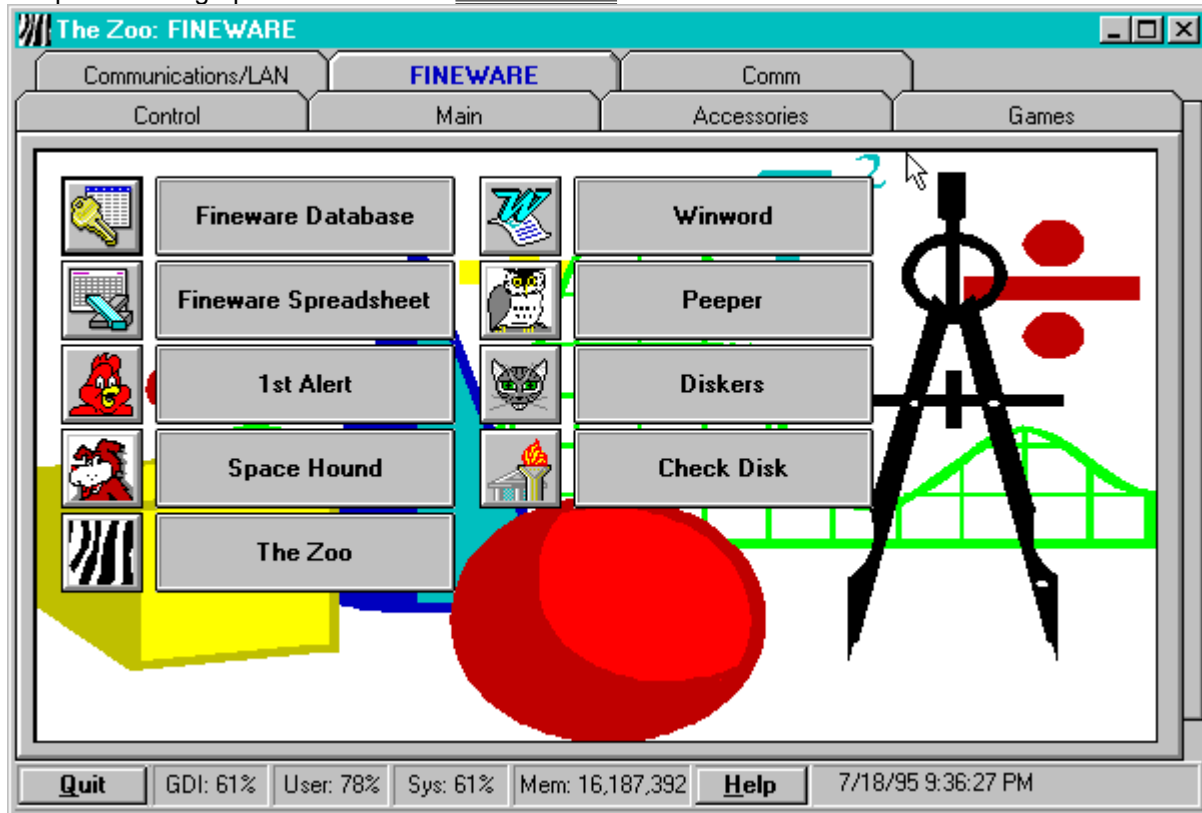
**Here is a few quick definitions to aide you in learning to use the program.**

- **GATE:** **The Zoo** uses a set of tabbed windows to display programs. A **GATE** is the tab used to enter one of the Zoo's Pens.
- **Zoo Pen :** **The Zoo** consist of a set of **Pens**. Each **Pen** can contain up to 40 **Computer Critters**.
- **Computer Critters:** Commonly known as application programs, software, documents, images, etc. The function of **The Zoo** is to provide easily accessible Gates to the **Zoo Pens** where you house your **Computer Critters**.
- **Critter Tag:** The descriptive title located just to the right of each Computer Critter. For identification purposes only.

Refer to the next help topic on How to Use the Program for an overview of the interface elements contained within the program.

## How to Use the Program

Use the mouse to select specific information about each screen element from the graphic below. Simply click once where you see the mouse pointer change to a pointing finger and you will trigger an on-screen description of the graphic. **Note:** See [Control Panel](#)





## Registration Information

See [Ordering Information](#)

### Features and benefits of Registered Version:

- Elimination of all references to registration and other "nag" screens.
- Additional updates, corrections and bug fixes implemented after the release of the shareware version.
- You will be alerted to new releases when available.



## Ordering Information

Registration for **The Zoo** is **\$29.95 plus shipping/Handling** You may either pay by check, money order, or via **credit card**.

Credit cards accepted: **Visa, MasterCard** or **American Express** [Read This](#).

Via **PHONE Direct** from Fineware. **(800) 544-1740**

Via **FAX Direct** from Fineware. **(405) 942-7819**

Via e-mail **Direct** from Fineware.

### E-Mail Addresses

#### **Al Meadows - Fineware Systems**

CompuServe.....70650,2022

Prodigy.....BBTK05A

America Online.....VB AL

**Note: Web Site : <http://WWW.fineware.com>**

Order Form Direct from Fineware using US Mail

**Available:** Visa, MasterCard, American Express, Check or Money Order

See Site License Ordering for multi-unit sales.

Ordering Online via **CompuServe SWReg Service**

**Available:** Conveniently billed to your CompuServe Account

PsL Ordering Information **Credit Card Orders ONLY**

**Available:** 800 Number, Fax, MasterCard, Visa, Amex, or Discover

See About PsL

Order form for **United Kingdom**

via **Oakley Data Systems**

**Available:** Fax, voice, email, credit cards

# Order Form

## The Zoo Ver 1.12

**Note:** Select "File-Print Topic" from the menu bar to **print** this form.

You can order **The Zoo** mail with payment by **check** , **money order** or **credit card**.

Name: \_\_\_\_\_  
Company: \_\_\_\_\_  
Street: \_\_\_\_\_

Street: \_\_\_\_\_  
City: \_\_\_\_\_  
State: \_\_\_\_\_ ZIP: \_\_\_\_\_  
Country: \_\_\_\_\_  
Telephone Number: \_\_\_\_\_

Credit Card Type: Visa MasterCard American Express  
(circle one)

Credit Card Number: \_\_\_\_\_

Expiration Date: \_\_\_\_\_

Signature: \_\_\_\_\_

(Unless otherwise requested we ship a 3.5" HD disk)

The Zoo	\$29.95	_____
Oklahoma residents add 8.375% sales tax		_____
Shipping/Handling - US or Canada	\$2.00	_____
Shipping/Handling - Outside of US/Canada	\$4.00	_____

Total in US Funds drawn on a US Bank \_\_\_\_\_

**Make checks payable to: Fineware Systems**

**Mail to:**  
Fineware Systems  
P.O. Box 75776  
Oklahoma City, Ok. 73147

By the way, where did you initially hear about **The Zoo**?  
\_\_\_\_\_ (If CompuServe, which forum)

## Program Icon

This will display the program's About screen when Double\_Clicked with the mouse.

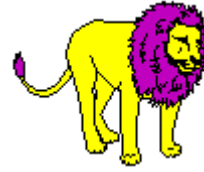
## Definition of Shareware

Shareware distribution gives users a chance to try software before buying it. If you try a Shareware program and continue using it, you are expected to register. Individual programs differ on details -- some request registration while others require it, some specify a maximum trial period. With registration, you get anything from the simple right to continue using the software to an updated program with printed manual.

Copyright laws apply to both Shareware and commercial software, and the copyright holder retains all rights, with a few specific exceptions as stated below. Shareware authors are accomplished programmers, just like commercial authors, and the programs are of comparable quality. (In both cases, there are good programs and bad ones!) The main difference is in the method of distribution. The author specifically grants the right to copy and distribute the software, either to all and sundry or to a specific group. For example, some authors require written permission before a commercial disk vendor may copy their Shareware.

Shareware is a distribution method, not a type of software. You should find software that suits your needs and pocketbook, whether it's commercial or Shareware. The Shareware system makes fitting your needs easier, because you can try before you buy. And because the overhead is low, prices are low also. Shareware has the ultimate money-back guarantee -- if you don't use the product, you don't pay for it.





## System Requirements

**The Zoo** requires Windows 3.1 or later or Windows for Work groups 3.11 or later. I have tried to provide keyboard support for most functions but a mouse or other pointing device is required.



A PC (386 processor or above) with at least 4 MB of RAM.



# Product Support

Technical support is available at no charge by sending electronic mail to:

## **Al Meadows (Fineware Systems)**

**70650,2022 on CompuServe**

**70650.2022@CompuServe.com on Internet** Note: **Web Site =**

**<http://www.fineware.com>**

**BBTK05A on Prodigy**

**VB AL on America On line**

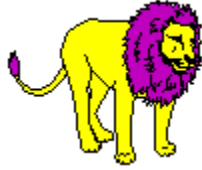
I prefer to handle support via e-mail but realize this is not possible for some users. Therefore, I also provide software support via fax at (405) 942-7819.

Technical support also available by sending US Mail to Fineware Systems , P.O. Box 75776, Oklahoma City, Ok 73147.

Registered users have priority but I will try to answer all questions.

## Copyright Notice

Copyright © 1995 Fineware Systems and Al Meadows . All rights reserved.



## Site Licensing

**Site License pricing is applicable to orders of 10 or more copies only.** Quantities under 10 are priced at the standard rate (see [order form](#)).

For quantities of 10 or more, the price is \$200.00 + \$10 per additional license over 10.

Example: a 50 user site license would be  $\$200.00 + (\$10 \times 40) = \$600.00$ .

**Note:** Only a single master diskette containing the program will be distributed on a site license unless requested otherwise. If you desire additional diskettes, please add \$1 per diskette desired.

## Ordering Online

You may order using CompuServe's Software Registration Service:  
enter **GO SWREG** at the ! prompt and follow the menus.

**The Zoo's** registration id is **6103**. The indicated price will be \$29.95 plus \$2 shipping and handling (\$4 outside US, Canada, and Mexico).

### Other Fineware Systems Products:

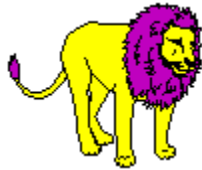
**Space Hound Pro's** registration id is **2594**. The indicated price will be \$37.95 which includes FREE shipping and handling.

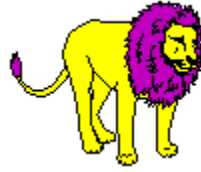
**Note:** Ordering On line via CompuServe is an exceptionally easy way for those users who live outside the United States to pay for Shareware.

## Credit Card Requirements

**When ordering with a credit card, it is important that you include the following information.**

- Credit Card Number
- Expiration Date
- Name as it appears on the card
- Address that your statements are delivered to (**Note:** This will be a requirement for all credit card transactions in the future when the card itself cannot be imprinted. It is for your own protection.)
- Address that the product is to be delivered to if different than your billing address.





## Upgrading to Latest Version

**The Zoo** will be continually upgraded to add features and correct programming errors as they are detected. In addition, changes to the underlying operating systems may make some features of the program redundant while creating new capabilities that can be enhanced by the program.

### **The policy of Fineware Systems on upgrades to registered users is as follows:**

If you are already a registered user of **The Zoo**, you may be able to update your existing registered version to the latest edition by simply downloading the most recent version while retaining the program's registered features. As program errors and bugs are detected and resolved, Fineware will make available additional releases on the main commercial services such as CompuServe, America Online, and Prodigy.

You may update your existing copy to the new version as long as the version number on the new release is 1.99 or less.

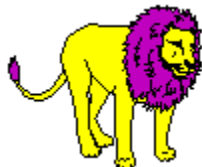
To update an existing installation, simply replace all existing files with any which are included within the zipped file.

If you do not have access to these two commercial online services, then we must provide you with diskettes via regular US Mail.

There is a \$5.00 Shipping/Handling charge for this service. You will receive a complete set of installation disks for the latest release.

Site license holders should contact Fineware Systems for a price quote.

**NOTE: Visit our Internet WEB SITE: <http://www.fineware.com>**



## About PsL

PsL is short for "Public (software) Library". PsL has been distributing public domain and shareware software on disks since 1982. PsL has been recommended in every major (PC) computer magazine, many computer books, and many non-computer publications such as NY Times.

PsL offers a shareware registration order taking service primarily for the benefit of shareware authors and their customers. The service began in January 1989 and presently takes orders for many hundreds of shareware authors.

PsL can take orders via our 800#, non-800#, CIS#, and FAX#. Their operators are available from 7:00 a.m. to 7:00 p.m. CST Monday-Friday and normally from 7:00 a.m. to 4:00 p.m. on weekends. They provide an easy and direct way to register shareware via CompuServe - via e-mail. FAX and credit cards are the primary means of registration for overseas customers.

**Please note** that support and usability problems **are not to be reported to PsL**. They do not have support technicians who are trained about the usage and capabilities of **The Zoo** and simply refer such calls to me anyway "after" charging me a service charge.



## PsL Ordering Information

You can order with **MasterCard, Visa, Amex, or Discover** from Public (software) Library by calling **1-(800) 2424-PsL** or **1-(713) 524-6394** or by **FAX** to **1-(713) 524-6398** or by **CompuServe E-mail** to **71355,470**. You can also mail credit card orders to PsL at **P.O.Box 35705, Houston, TX 77235-5705**.

**THE ABOVE NUMBERS ARE FOR ORDERS ONLY. NOT TECHNICAL SUPPORT.**

[PsL Order Form](#)

**Any questions about the status of the shipment of the order, refunds, registration options, product details, technical support, volume discounts, dealer pricing, site licenses, etc., must be directed to Fineware Systems .**

To insure that you get the latest version, PsL will notify us the day of your order and we will ship the product directly to you.

# PsL Order Form

PsL Order Form (ver 1.12)

**Note:** Select "File-Print Topic" from the menu bar to print this form.

You can order **The Zoo** by Phone, Mail or FAX with payment by credit card.

## PsL Product# 14053

Name: \_\_\_\_\_

Company: \_\_\_\_\_

Street: \_\_\_\_\_

Street: \_\_\_\_\_

City: \_\_\_\_\_

State: \_\_\_\_\_ ZIP: \_\_\_\_\_

Country: \_\_\_\_\_

Telephone Number: \_\_\_\_\_

Credit Card Type: \_\_\_\_\_

Credit Card Number: \_\_\_\_\_

Expiration Date: \_\_\_\_\_

Signature: \_\_\_\_\_

**(Unless otherwise requested we ship a 3.5" HD disk)**

<b>The Zoo</b>	29.95	_____
Texas residents add 8.25% sales tax		_____
Shipping/Handling - US or Canada	2.00	_____
Shipping/Handling - Outside of US/Canada	4.00	_____
Total in US Funds:		_____

### FAX or Mail

Public (software) Library

P.O. Box 35705

Houston, TX 77235-5705

Orders: 1-800-2424-PsL or 1-713-524-6394

FAX Orders: 1-713-524-6398

By the way, where did you obtain the shareware version of **The Zoo**: \_\_\_\_\_

# Oakley Data Services Ordering Info

## The Zoo Ver 1.12

**Note:** Select "File-Print Topic" from the menu bar to *print* this form.

You can order **The Zoo** by Phone, Mail, E-mail or Fax with payment by credit card.

**Oakley Data Services,  
3 Oakley Close,  
Sandbach,  
Cheshire CW11 9RQ,  
England.**

Call +44 (0)270 759739  
Fax +44 (0)270 765272  
CIS: 74774,1347

### The Zoo

Name: \_\_\_\_\_

Company: \_\_\_\_\_

Address: \_\_\_\_\_

: \_\_\_\_\_

: \_\_\_\_\_

: \_\_\_\_\_

: \_\_\_\_\_

Telephone Number: \_\_\_\_\_

Credit Card Type: \_\_\_\_\_

Credit Card Number: \_\_\_\_\_

Expiration Date: \_\_\_\_\_

Signature: \_\_\_\_\_

(unless otherwise requested we ship a 3.5" HD disk)

The Zoo 18.00 \_\_\_\_\_

Shipping/Handling 2.00 \_\_\_\_\_

UK and EEC add 17.5% VAT 3.50 \_\_\_\_\_

Total in Pounds Sterling: \_\_\_\_\_

By the way, where did you initially hear about **The Zoo**: \_\_\_\_\_

## Gate Descriptions

These are the gates to each area of your zoo. They work just like index tabs. Use the mouse to select the **Zoo Pen** desired. Up to 40 pens can be defined.

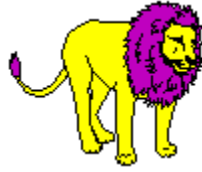
## Current Pen Description

The currently displayed Zoo Pen is indicated by the **Gate** with the **Blue** text.

## Blank Space

This space is ready for expansion. You may create up to 40 **Zoo Pens** in each instance of **The Zoo**. See additional documentation on maintaining multiple **Zoos** on your computer.  
**It's easy!**





## Computer Critters

Each button represents a different program or document that you can launch (run). Since these are real buttons, only a single click is required to launch the program assigned to the button.

### **Miscellaneous Comments:**

You can control how these **Computer Critters** are positioned. Place as many as 12 of them in a vertical stack or as few as 1 (See Control Panel). You can design each **Zoo Pen** separately.

**Usability Hint:** By using the **Right Mouse Button**, you can drag a **Computer Critter** out of it's current **Zoo Pen** and drop it on any of the other **Gates**.

See Miscellaneous Drag & Drop Operations

## Zoo Pen Wallpaper

You can assign a graphic image which will be displayed behind the buttons. These images can be in either the Windows Metafile Format (.WMF) or in standard Bitmap format (.BMP).

Each **Zoo Pen** can have a different background. Bitmap images can be centered, stretched, or tiled. Tiling creates a very nice effect when used with some of the small bitmaps which are included with Windows like the file **redbrick.bmp**. You will find several .WMF and .BMP files within the program's directory. An additional diskette containing many useful backgrounds and images will be provided as a bonus to those who purchase the unlimited version of **The Zoo**.

### **Additional Options**

You can also assign a background color (with or without an image). The purpose of these backgrounds is to add pleasure to your computing experience but it's also functional because it aides you in recognizing one **Zoo Pen** from another.

Use the **Right Mouse Button** to display a menu of functions that you can perform. These include

- Addition of a new **Computer Critter**
- Import existing Windows 3.1 Program Manager group files
- Setting **Zoo Pen** Options (Colors, images, fonts, etc)
- Delete **Zoo Pen**

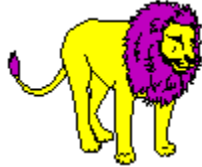


## Critter Tags

A **Critter Tag** provides the name or function associated with the button. You can control the appearance of the tag by customizing the font style, size, and color used.

### **Additional Functions**

Use the **Right Mouse Button** to display a menu of functions which can be performed against the tag such as changing the description, DOS file location of the program, icon to use, etc.



## Close The Zoo

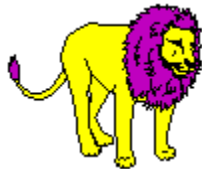
**Turns out the lights as you leave the Zoo.** Fineware Systems offers no guarantees about what your **Computer Critters** do while your gone. We do suggest however, that you spend some time caring for your **Critters**. Here is a list of things you should do.

**1) Make sure that they have plenty of room.** Fineware Systems is proud to offer our flagship product **Space Hound** as a great tool for helping with hard disk management. It's a **Critter** also and it's main job is to **Sniff Out** wasted space on your hard disk.

**2) Watch them carefully.** Our product **Peeper** is a versatile multiple document file viewer capable of viewing over 20 different file formats including ASCII, HEX, PCX, TIF, GIF, BMP, WMF, ICON, Microsoft Word, WordPerfect, AMI PRO, xBase, Paradox, Lotus, Excel, ZIP, LZH, Quattro Pro, MetaFiles, Q&A, Windows Write, and Microsoft Works. Also included are Program Information Files (.PIF) and Windows Group File (.GRP).

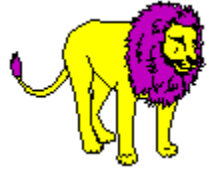
**3) Check them regularly.** **1st Alert** may be just the tool you need to aide your business. It's a credit card account number testing tool. Use it to decipher hard to read, hand written Visa/MasterCard/American Express account numbers before you pay for that authorization call.

**4) Feed Them.** Perhaps someone can help me out on this one. I was going to mention our disk duplicating utility **Diskers** and I couldn't think of a way to work it into the theme of this section of the help file. All I could come with is that purchasing **Diskers** as well as our other programs will keep the Fineware Systems family well fed and happy.



## Call the Zoo Keeper

This summons the program's help file. Great for obtaining advice on running a successful Zoo.



## Zoo Time

You can tell from the time that I work long hours at creating products like **The Zoo**. I hope you enjoy it and find it useful.

## Zoo Resources

Well, actually this is Windows Resources. When these numbers get too low, you can run into problems. Keep an eye on them and shut down unnecessary programs if these indicators turn yellow or red.

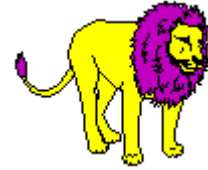
# Advanced Functionality

## **Topics**

Import Program Manager Groups

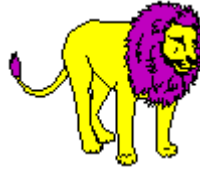
Move Critters between Zoo Pens **(Drag & Drop Operations)**

Edit The Zoo control file



## Fineware Accepts

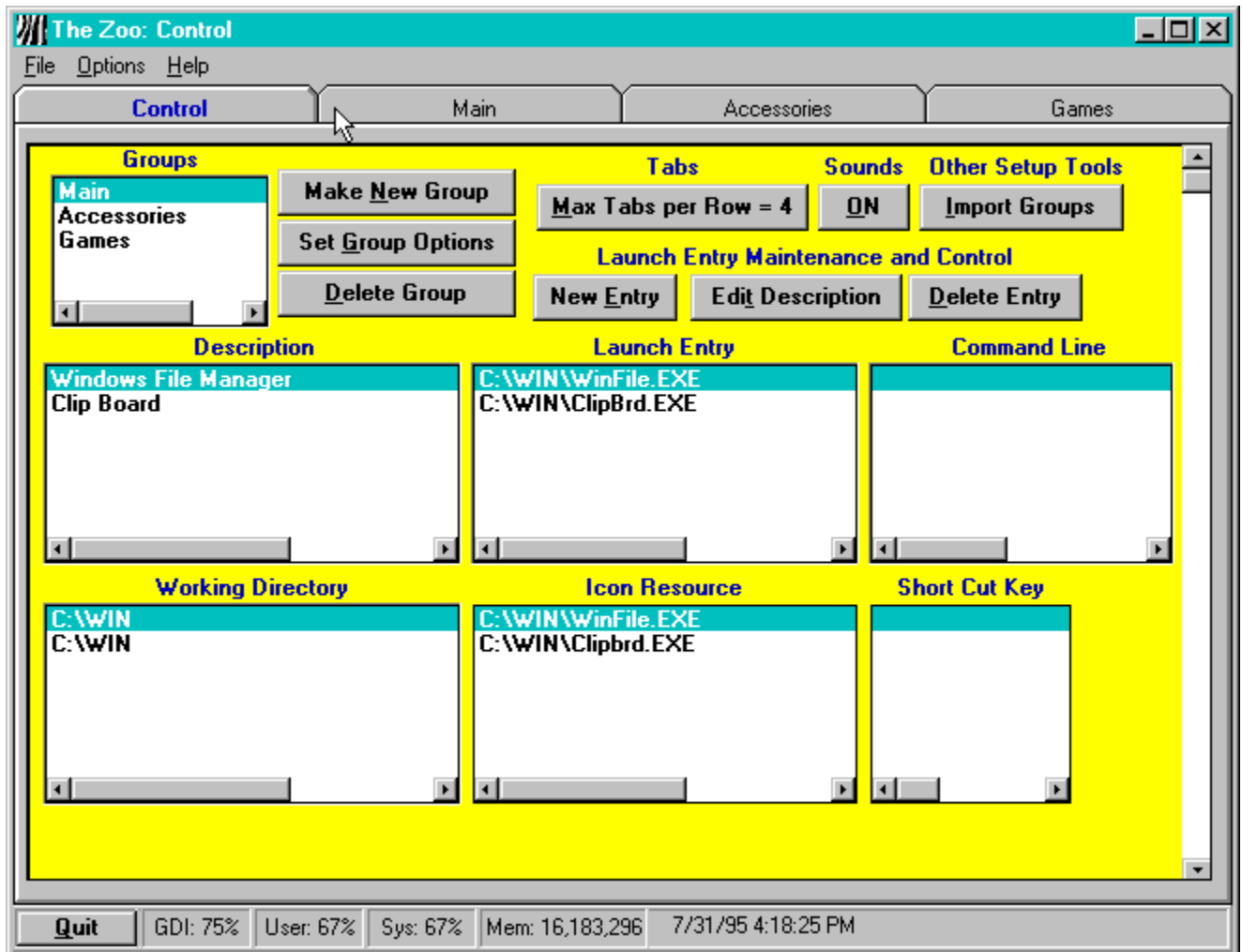
Fineware Systems accepts **Visa, MasterCard, and American Express.** [Call our order phone \(800-544-1740\) today!](#)



## Control Panel

The control panel allows you to view the options which have been set for all of the Zoo Pens and Critters at a glance. You may also edit these settings by using the buttons to perform additional functions. **Note:** Virtually all of the control panel operations can be performed by using the **Right Mouse Button** while one of the **Zoo Pen** displays is showing.

Note: Use the Edit Entries button to change the settings of the highlighted launch item.

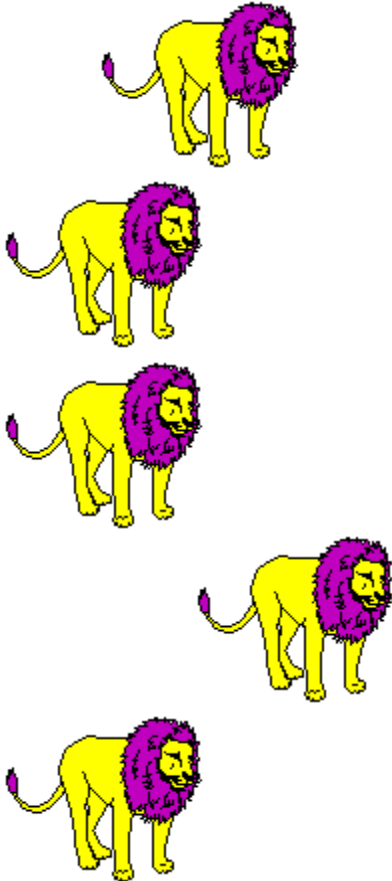




## Import Program Manager Groups

The Zoo can read your existing Windows 3.1 Program Manager Groups. There are two ways to import an existing .GRP file. You can either select the Import Groups Button on the Control Tab or use the Pull Down Menu. Note: The Pull Down Menu for this function can be activated by using the right mouse button. Simply point to an area of the Zoo Pen which doesn't contain Critter Tags or Buttons and right click.

The import includes all command lines, shortcut keys, icon assignments, and descriptions.



## Open Gate

This Gate Description illustrates the how the current **Zoo Pen** is identified. Note: The name of the Zoo Pen is also located on the program's Title Bar.



## Title Bar

This is the program's Title Bar. It is also used to identify the currently open **Zoo Pen**.

## Miscellaneous Drag & Drop Operations

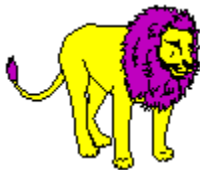
The **Right Mouse Button** can be used for dragging a Computer Critter between Zoo Pens. You cannot drop it onto the **Gate** labeled Control (see Control Panel). Only one Computer Critter can be dragged at a time.

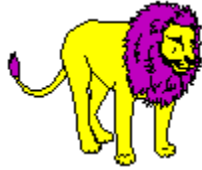
Files can be dragged onto **The Zoo** from the Windows File Manager. This provides a very easy way to bring a group of programs and documents into **The Zoo** in a single step. You may select multiple files within the Windows File Manager by using the Mouse and the Control Key while Selecting to select non-contiguous items or you can use the Mouse and the Shift Key to Select a range. Please refer to your Windows File Manager Help file for further instructions.

If a **Computer Critter** is dragged and dropped into its own Zoo Pen, it moves to the end of all existing **Critters**. It isn't possible to insert a **Critter** between existing **Critters** but by moving each of the existing Critters one at a time, you can select the desired order.

If Program Manager Groups are marked and dragged from File Manager, it causes **The Zoo** to invoke its Program Manager Group import functions using the dropped files as input.

See Import Program Manager Groups





## The Zoo Control File

One of the primary reasons The Zoo was created in the first place was because of the need to edit working directories, icon resource locations, etc. easily. The Zoo maintains all of it's control information in a easily editable Ascii Text document. It's format resembles all of the other Windows INI files you may have examined at one time or another. **Note:** You should always make a backup copy of your Zoo control file before editing. Also, this area is for experienced Windows users who are comfortable with manually editing Windows INI files.

Listed below is the contents of ZOO.INI as it was initially created on a typical machine where the Windows directory is located on drive C:. Comments describing each section

```
[Groups]
Position=1185,525,7950,9630      Launch position coordinates when last closed
Launches=2                      Times Launched
Sounds=ON                       Launch Sounds
Rows=4                          Tabs per row
Tabs=03                         Current number of Tabs (AKA Sections, Groups or Zoo Pens)
S01=Main                       Name of Section 1
S02=Accessories                Name of Section 2
S03=Games                      Name of Section 3

[Main]                          Section 1 heading
Items=002                      Number of Items within the Section
Vertical=8                     Number of items in a vertical stack
Font=MS Sans Serif,8.25,-1,0    Font used within Section Main
Color=0,16777215               Foreground & Background Colors
P001=C:\WINDOWS\WinFile.EXE,C:\WINDOWS,Windows File Manager,,C:\WINDOWS\WinFile.EXE,0,
P002=C:\WINDOWS\ClipBrd.EXE,C:\WINDOWS,Clip Board,,C:\WINDOWS\Clipbrd.EXE,0,
NOTE: See PopUp for description of the two lines above
NOTE: The two additional sections below function just like the [Main] section.

[Accessories]
Items=003
Vertical=8
Font=MS Sans Serif,8.25,-1,0
Color=0,16777215
P001=C:\WINDOWS\notepad.EXE,C:\WINDOWS>Note Pad,,C:\WINDOWS\notepad.EXE,0,
P002=C:\WINDOWS\Calc.EXE,C:\WINDOWS,Calculator,,C:\WINDOWS\Calc.EXE,0,
P003=C:\WINDOWS\Clock.EXE,C:\WINDOWS,Clock,,C:\WINDOWS\Clock.EXE,0,
Image=c:\zoo\RedBrick.bmp,2

[Games]
Items=002
Vertical=8
Font=MS Sans Serif,8.25,-1,0
Color=0,16777215
P001=C:\WINDOWS\Sol.EXE,C:\WINDOWS,Solitaire,,C:\WINDOWS\Sol.EXE,0,
P002=C:\WINDOWS\Winmine.EXE,C:\WINDOWS,Mine Sweeper,,C:\WINDOWS\Winmine.EXE,0,
Image=c:\zoo\5ppuzzle.wmf,0
```

## Program Entries

**P001=C:\WINDOWS\WinFile.EXE,C:\WINDOWS,Windows File Manager,C:\WINDOWS\WinFile.EXE,0,**

**Note:** a comma separates each portion of the entry.

**P001** indicates that it is the launch entry in position #1 within the group.

The program name to the right of the Equal Sign (**C:\WINDOWS\WINFILE.EXE**) indicates the DOS file name of the executable program or document. If it is a document or other non-executable file, then the file's File Manager association determines which program is launched.

The 3rd entry (**C:\WINDOWS**) indicates the default directory.

**(Windows File Manager)** is the title of the entry and will be displayed within the Critters Tag.

Although this entry doesn't contain one, the position between **(Windows File Manager)** and **C:\WINDOWS\WinFile.EXE** is used to contain a command line entry.

The final **C:\WINDOWS\WinFile.EXE** is the file location where the launch entry's icon (icon resource) is to be found. Normally, this will be the name of the file being launched.

Following the icon resource name is the relative index position of the icon within the resource. Use of a Zero indicates that the first icon found within the resource should be used.

The last entry doesn't appear within this example. If used, it would contain the shortcut key which is used to launch the program. A single letter **F** would indicate that the key combination of **Ctrl + Alt + F** would cause this launch entry to start.

## Zoo Pen List

Listbox containing all existing Zoo Pens. Select the one desired and the rest of the list boxes will show the launch entries (Computer Critters) located within the Zoo Pen and the associated parameters which control how the program operates when launched.

## Descriptive Name

This describes the name which is located within the **Critters Tag**. You can call a **Critter** by any name desired.

**Note:** If the **Critter** can be launched using a short cut key (**Ctrl + Alt + ?**), then the short cut key will be displayed within the **Critters Tag** automatically. It isn't necessary to add it yourself.



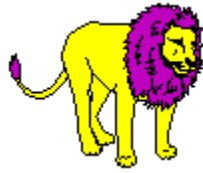
## Executable Name

File name of the program which will be launched. If the program can be found within the Path (Refer to your DOS and Windows manual) then it is not necessary to include the fully qualified directory name but it is recommended that you do so.

## Command Line Entry

Some programs allow you to launch them with a command line for controlling how the launched program operates.

## Working Directory



Default directory for the program.

**Note:** To Edit this entry, select the Edit Description Button.

## Icon Resource

File name which contains the icon which is to be displayed on the Computer Critter's launch button.

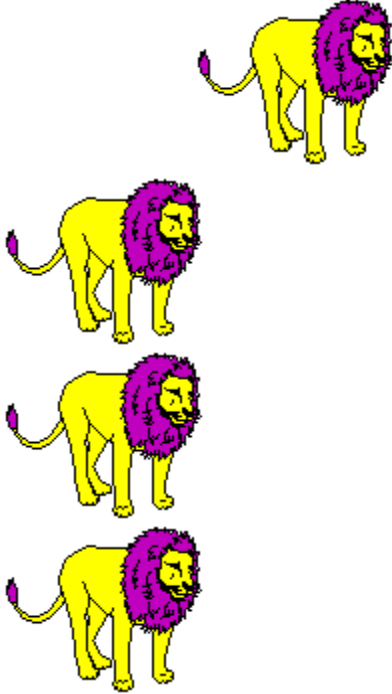


## Short Cut Key

You may assign a keyboard shortcut to any Computer Critter desired.

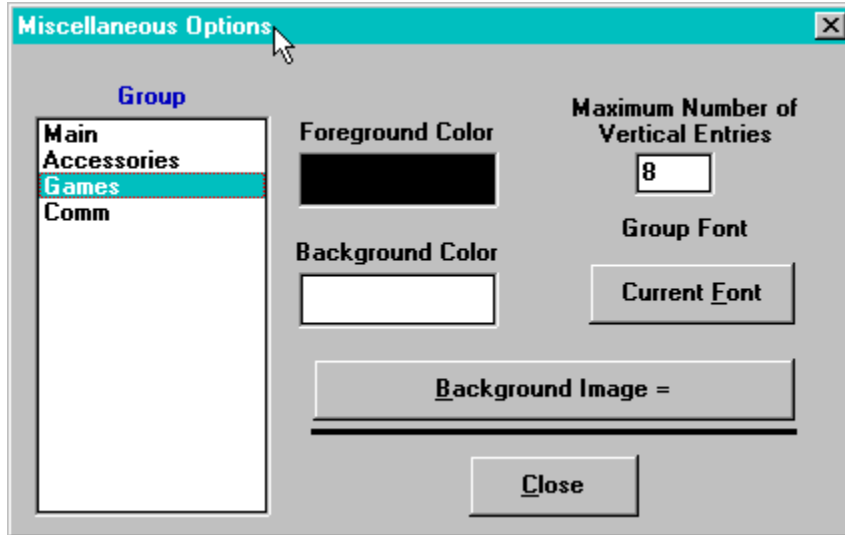
## Make New Group

Press this button to display a screen which allows you to import an existing Windows File Manager Group file (.GRP).



## Set Group Options

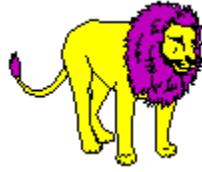
Group Option control screen. Use the Mouse to select and display information about individual screen elements.



## Delete Group

Press this button to delete the currently highlighted group.





## Tabs per Row

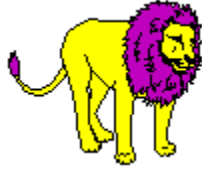
This setting determines how many tabs (Zoo Gates) are displayed per tab row.

Enter Maximum Tabs per Row

OK Cancel

## Sounds

You may turn off the animal sounds that occur on launch if you find them annoying. This may also be controlled via the options item on the pull down menu.



## New Entries

You may add new Computer Critters to the currently highlighted Zoo Pen (Group). You may add as many as 50 to a single Zoo Pen.

**Note:** You can also add new Critters by using the Right Mouse button and clicking within the Zoo Pen itself.

## Edit Description

Use this screen to perform all edits on existing **Computer Critter** entries.

The screenshot shows the 'Entry Maintenance' dialog box with the following fields and options:

- Location: `c: [PEEPER_S...]`
- Programs Only
- File list (left): `c:\`, `win`, `apw_data`, `cavier`, `command`, `config`, `cursors`
- File list (right): `share002.pwl`, `shares.pwl`, `shed.ini`, `smartdrv.exe`, `smokin!.wav`, `sndrec32.exe`, `sndvol32.exe`, `sol.exe`
- Descriptive Title: `Solitaire`
- Launch Entry: `c:\win\sol.exe`
- Command Line: (empty)
- Working Directory: `C:\WIN`
- Icon Resource: `C:\WIN\Sol.EXE` (with a **Browse** button)
- Shortcut Key: `Ctrl + Alt +` (with an empty input box)
- Current Icon = (with a Solitaire icon)
- Buttons: **OK**, **Cancel**

## Delete the Computer Critter

Use this button to remove an existing **Computer Critter** from its **Zoo Pen**.

## Select Font

You may assign a different font for each **Zoo Pen**. The **Critters Tag** is where the font is used.

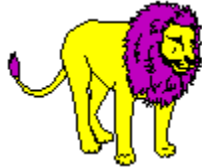
Use this button to display a font selection dialog box.



## Colors

You may assign any color within the range of your computer's video card and monitor to the Zoo Pen's background. The foreground color is for use within the Critters Tag.

Double Click within the colored rectangular area to launch a color dialog. This will allow you to choose the color desired.



## Vertical Stacking

This controls the number of Computer Criters which are to be stacked vertically before rolling over to the next column. The maximum allowed is 12.





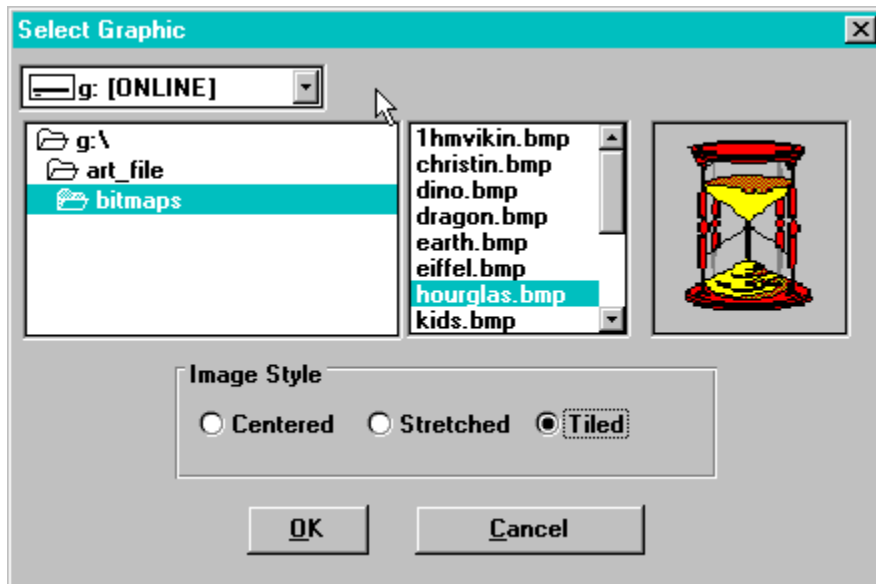
## Current Group

The current **Zoo Pen** being effected is displayed here.



## Background Wallpaper

You may assign any BITMAP or Windows MetaFile as wallpaper for a Zoo Pen. Each Zoo Pen can have a different image and the image can be displayed in three different ways. It can be centered, stretched, or tiled.



## Close Button

This closes the dialog box.

## Tabs across a single row

You can type a number here and control the number of tabs (**Zoo Gates** ) are displayed across a single row before wrapping around to an additional row.

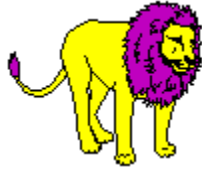


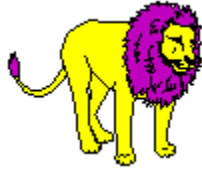
## Selected Image

This is a thumbnail image of the currently highlighted graphic.

## Image Style

Each **Zoo Pen** can utilize a different graphic image method.





## Directory Tree

Directories found on the current highlighted drive.

**Note:** This image represents a directory and file found on the program author's computer.



## Graphic Files

Files found within the currently highlighted directory. Only Bitmaps (.BMP) and Windows Metafiles (.WMF) will be listed.

**Note:** This image represents a directory and file found on the program author's computer.



## Disk Drive

This control allows you to select a particular disk drive for graphics files.

**Note:** This image represents a directory and file found on the program author's computer.

## Program Location

This Disk, Directory, and File list group allow you to select the fully qualified path name that you wish to assign to the launch entry.

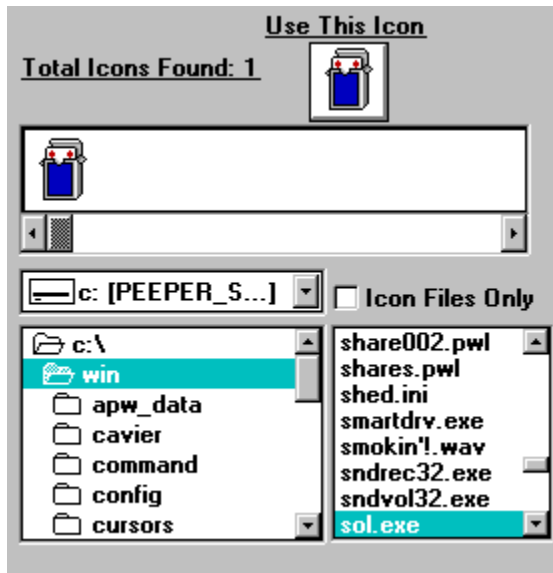
## Launch Item Specifications

You may use these entries to assign a descriptive title, enter a command line, establish a working directory, identify an icon resource, and select a shortcut key.

**Note:** You can use an additional Disk, Directory, and File list to select the icon resource by using the browse button.

## Browse for Icon

You can use an additional Disk, Directory, and File list to select the icon resource by using the browse button. The dialog box will expand to the right giving you the display shown below.



## Selected Icon

Press this button to select the currently highlighted icon.

## Available Icons

All icons found within the currently highlighted file will be displayed here. Use the mouse to select the one that you wish to assign to the **Computer Critter** being edited.

**Note:** It is necessary to select the **USE THIS ICON** button to make the assignment.

## Drive, Directory, Files

Use these controls to examine the contents of various files. You may select the option to only display files which are likely to contain embedded icons.

# Glossary



## **A**

AI Meadows

## **C**

Computer Critter

## **F**

Fineware Systems

## **G**

Gates

## **L**

launched

## **P**

positioned

PsL

## **S**

shell

## **T**

tiled

## **Z**

Zoo Pen



**Fineware Systems**

Fineware Systems

PO Box 75776

Oklahoma City, OK 73147

## **AI Meadows**

Custom programming services available.

**PsL**

Public (software) Library

P.O. Box 35705

Houston, TX 77235-5705

**shell**

Program Manager or substitute shell such as the PC Tools for Windows Shell or the Norton Desktop for Windows.

**Computer Critter**

A computer program, document, or file.

## **Zoo Pen**

Similar to a Program Manager Group under Windows 3.1

**Gates**

Tabs aligned across the top of the Zoo Pen. You may press them to close the current Zoo Pen and open the selected one.

**positioned**

Think of it as putting your Ducks in a Row (apologies to user's outside the US. This is a local saying for getting things organized in a logical manner).



## **launched**

This means RUN (Launch) or RAN (Launched)

**tiled**

Repeated again and again until the area is 100% covered.



